

The Nigel

Lot 27 - 3532 Paperbark Crescent
5 BD / 3.5 Bath / 1 BD Suite



latoriaRISE
48 Distinctive New Homes
www.latoriarise.ca



LANGDON WEIR
CONSTRUCTION
LTD.



BuiltGreen

\$939,000
Including GST

Chris Langdon
Realtor
chrislangdon@sutton.com
MOBILE 250-893-8862

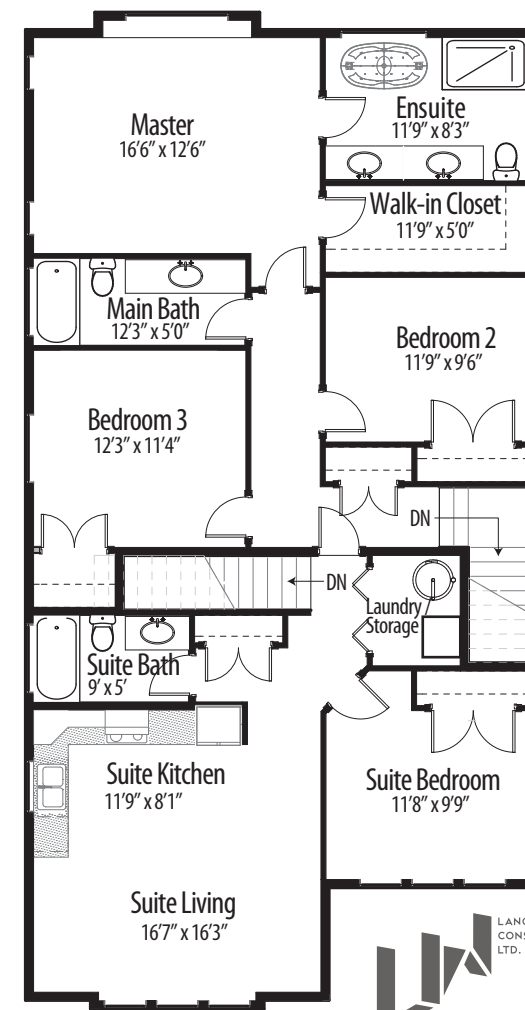
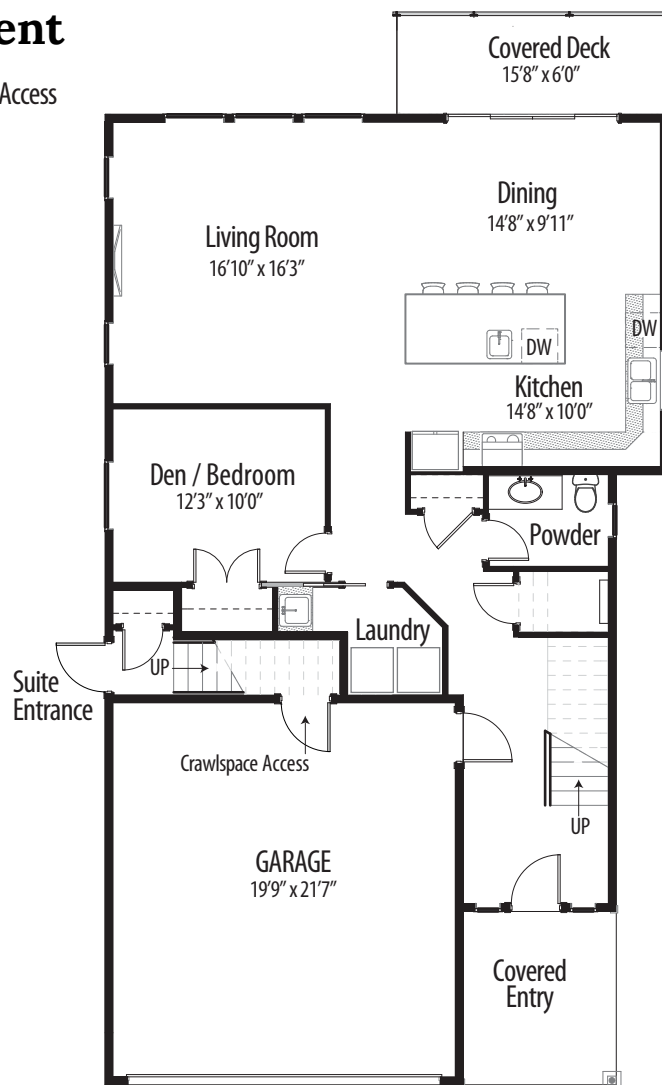
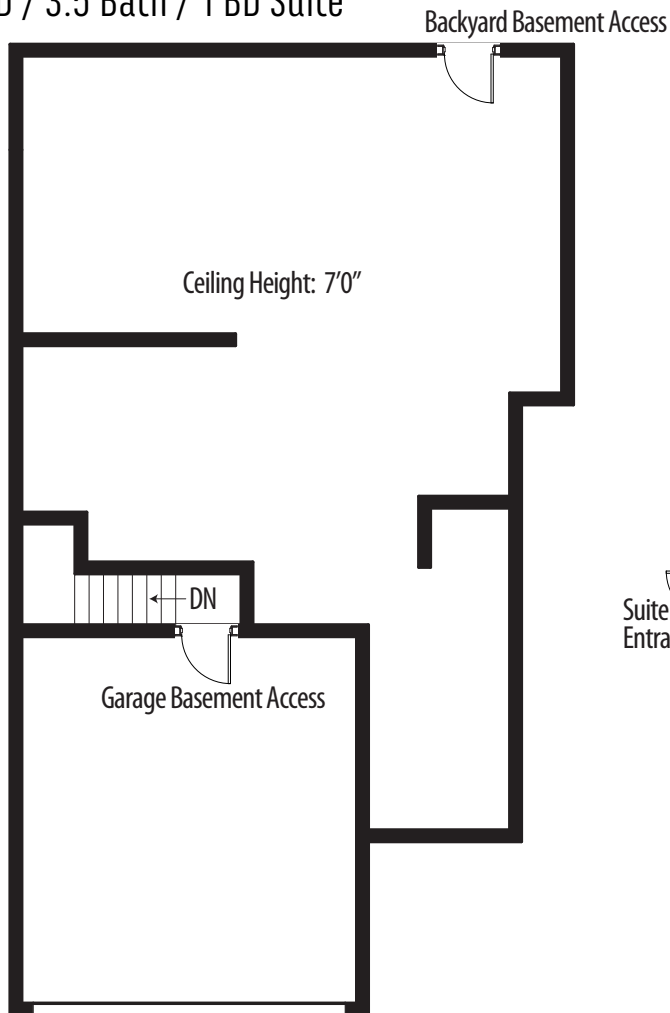
LOWER

MAIN

UPPER

Lot 27 - 3532 Paperbark Crescent

5BD / 3.5 Bath / 1 BD Suite



SPECIFICATIONS

| | |
|---------------------|---------------|
| UPPER | 1,513 SQ. FT. |
| MAIN | 1,161 SQ. FT. |
| TOTAL FINISHED AREA | 2,674 SQ. FT. |
| BASEMENT | 1,161 SQ. FT. |

FEATURES

- 10' SUPER ISLAND W/ 2nd SINK & 2nd DISHWASHER
- ONE BEDROOM / 600 SQ. FT. 'FLEX' SUITE
- 7'0" UNFINISHED BASEMENT
- COVERED DECK & YARD BACKING ONTO GREENSPACE
- HEAT PUMP + GAS FIREPLACE + HOT WATER ON DEMAND
- HARDIE COLOR PLUS SIDING + TRIM

BUILT GREEN GOLD



latoriaRISE
48 Distinctive New Homes
www.latoriarise.ca

These plans are not intended to fully or completely represent the final product. All sizes are approximate. Information presented is subject to change without notice.